

LASA Raptor Band Auditions

Tuba

Brass Set B

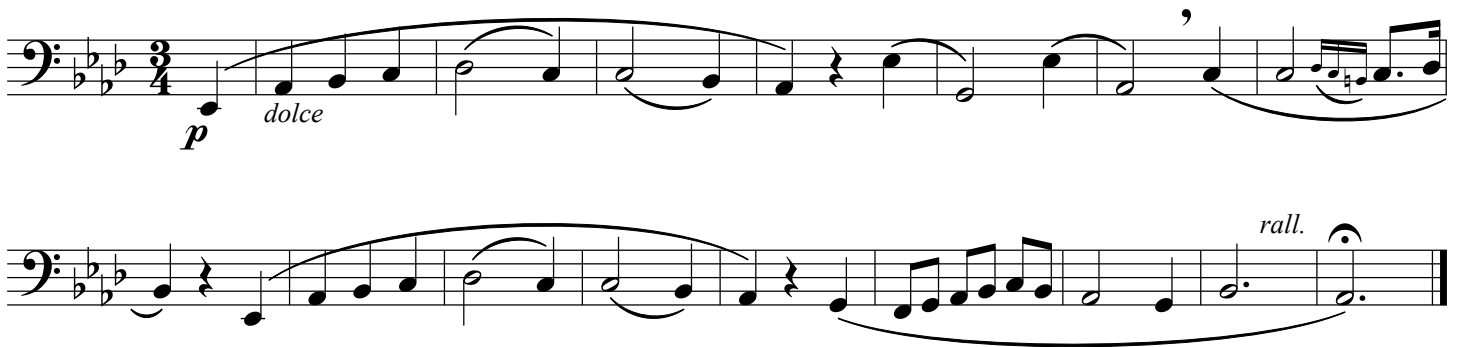
- I. Perform three (3) Major Scales of your choice – Tongue Up, Slur Down.
Two octaves is better than one, but playing with beautiful tone is essential.

- II. Perform the two excerpts below.**

Lyrical Excerpt - Lyrical Study #30 - Concone

There are no dynamics suggested, except for the starting dynamic. The students who perform the best will shape each phrase by playing compelling, contrasting dynamics.

Moderato ♩=109



Technical Excerpt - Etude 8. Longinotti

Focus on crisp note starts and beautiful tone.

Choose the tempo that showcases your technique ♩=80-120



- III. Optional (encouraged) –** Perform a short (30-60 second) excerpt of your own choice. For example, part of a solo you've previously prepared, part of a district or region band etude, or another piece you feel demonstrates your strengths and talents.