

# LASA Raptor Band Auditions

Trombone and Euphonium

Brass Set B

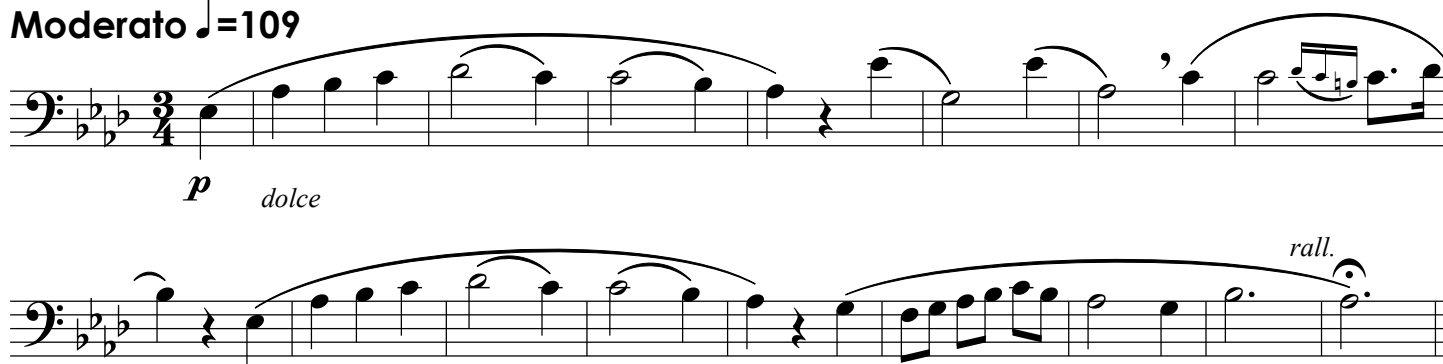
I. Perform three (3) Major Scales of your choice – Tongue Up, Slur Down.  
Two octaves is better than one, but playing with beautiful tone is essential.

II. Perform the two excerpts below.

## Lyrical Excerpt - Lyrical Study #30 - Concone

There are no dynamics suggested, except for the starting dynamic. The students who perform the best will shape each phrase by playing compelling, contrasting dynamics.

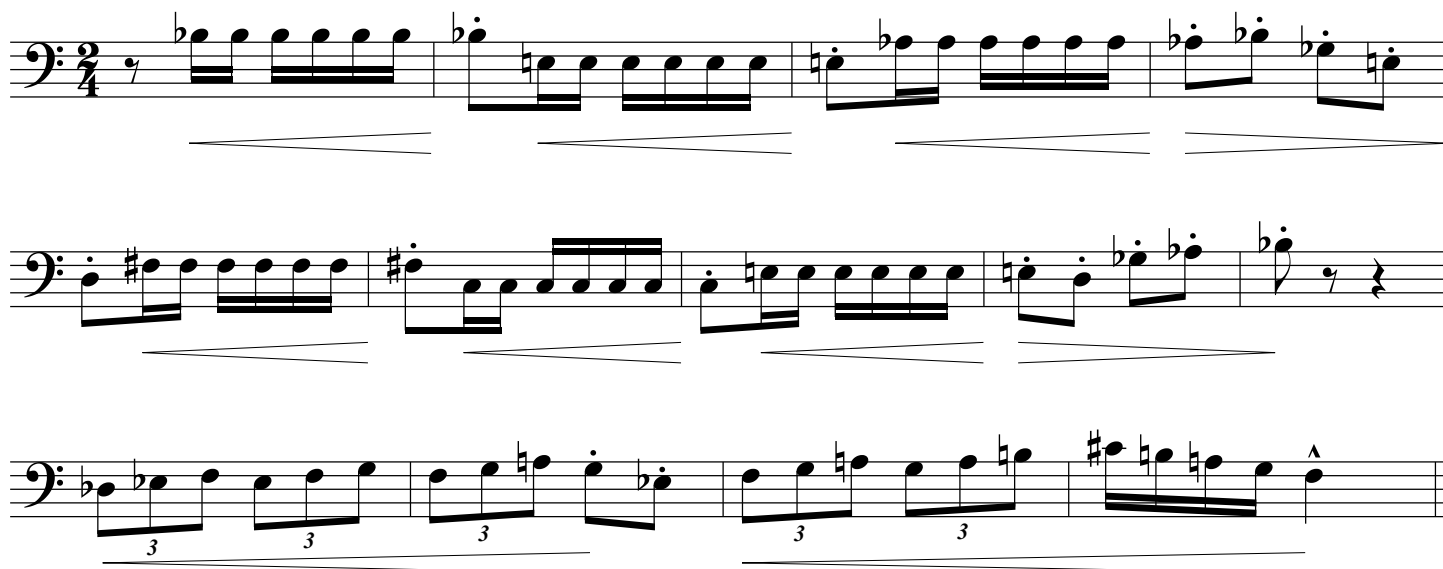
**Moderato** ♩=109



## Technical Excerpt - Etude 8. Longinotti

Focus on crisp note starts and beautiful tone.

Choose the tempo that showcases your technique ♩=80-120



III. Optional (encouraged) – Perform a short (30-60 second) excerpt of your own choice. For example, part of a solo you've previously prepared, part of a district or region band etude, or another piece you feel demonstrates your strengths and talents.