

LASA High School DRUMLINE AUDITION 2022

(Snare, Tenor, Bass)

Must wear drums

Must mark time

8-8-16

108 bpm - Full Extension (15")

132 bpm - 12"

Duple Timing (Stock, 3 note, 2 note, 1 note)

86 bpm - 12"

Triplet Timing (2 note, 1 note, Right + Left)

100 bpm - 12"

Accent/Tap

108 bpm - 12/3"

120 bpm - 9/3"

Double Beat A

108 bpm - Full extension

120 bpm - 12"

Gallop

148 bpm - 9"

160 bpm - 9"

7/8 Paradiddle

108 bpm - 12/3"

132 bpm - 9/3"

Rudiments

Please prepare **AT LEAST 2** rudiments of your choice from the rudiment sheet included in the audition packet

LASA High School Drumline Audition

8-8-16

Measures 1-4: A 4/4 drum pattern consisting of eighth notes. The first two measures have a steady eighth-note pattern. The third measure has a steady eighth-note pattern with a slight accent on the first eighth note. The fourth measure has a steady eighth-note pattern with a slight accent on the first eighth note.

RRRRRRRR LLLLLLLL RRRRRRRR RRRRRRRR

5

Measures 5-8: A 4/4 drum pattern consisting of eighth notes. The first two measures have a steady eighth-note pattern. The third measure has a steady eighth-note pattern with a slight accent on the first eighth note. The fourth measure has a steady eighth-note pattern with a slight accent on the first eighth note.

LLLLLLLL RRRRRRRR LLLLLLLL LLLLLLLL R

Stock Duple Timing

10

Measures 10-14: A 4/4 drum pattern consisting of eighth notes. The first two measures have a steady eighth-note pattern. The third measure has a steady eighth-note pattern with a slight accent on the first eighth note. The fourth measure has a steady eighth-note pattern with a slight accent on the first eighth note.

RLRLRLRLRRR RLRLRLRL LL LL RLRLRLRLRRR RLRLRLRL LL LL

3 Note Duple Timing

15

Measures 15-17: A 4/4 drum pattern consisting of eighth notes. The first two measures have a steady eighth-note pattern. The third measure has a steady eighth-note pattern with a slight accent on the first eighth note.

RLRLRLRLRLRLRLRL LRL LRL LRL LRL RLRLRLRLRLRLRLRL

18

Measures 18-20: A 4/4 drum pattern consisting of eighth notes. The first two measures have a steady eighth-note pattern. The third measure has a steady eighth-note pattern with a slight accent on the first eighth note.

R RL R RL R RL R RL RLRLRLRLRLRLRLRL RL LRL LRL LRL L

21

Measures 21-23: A 4/4 drum pattern consisting of eighth notes. The first two measures have a steady eighth-note pattern. The third measure has a steady eighth-note pattern with a slight accent on the first eighth note.

RLRLRLRLRLRLRLRL RLRLRLRLRLRLRLRL RLRLRLRLRLRLRLRL

2 Note Duple Timing

24

Measures 24-26: A 4/4 drum pattern consisting of eighth notes. The first two measures have a steady eighth-note pattern. The third measure has a steady eighth-note pattern with a slight accent on the first eighth note.

RLRLRLRLRLRLRLRL RL RL RL RL RLRLRLRLRLRLRLRLRL

27

Measures 27-29: A 4/4 drum pattern consisting of eighth notes. The first two measures have a steady eighth-note pattern. The third measure has a steady eighth-note pattern with a slight accent on the first eighth note.

RL RL RL RL RLRLRLRLRLRLRLRLRL RLRLRLRLRLRLRLRL

30

Measures 30-32: A 4/4 drum pattern consisting of eighth notes. The first two measures have a steady eighth-note pattern. The third measure has a steady eighth-note pattern with a slight accent on the first eighth note.

RLRLRLRLRLRLRLRL LR LR LR LR R

**1 Note
Duple Timing**

33 

R L R L R L R L R L R L R L L L L R L R L R L R L R L R L R R R R

37 

R L R L R L R L R L R L R L L L L L L

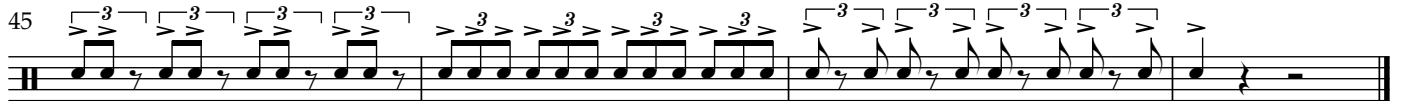
39 

R L R L R L R L R L R L R L R R R R R

**2 Note
Triplet Timing**

42 

R L R L R L R L R L L R R L L R R L R L R L R L R L R L

45 

R L L R R L L R R L R L R L R L R L R R L R L L R

**1 Note
Triplet Timing**

49 

R L R L R L R L R L L R L R R L R L R L R L R L R L

52 

R L R L R L R L R L R L R L R L R

Right + Left Triplet Timing

56 

R L R L R L R R R R L R L R L L L L

58 

R L R L R L R R R R L R L R L L L L R

Accent/Tap

61

R r r R r r R r L l l L l l L l r R r r R r R r

64

l L l l L l l l r r R r r R R r l l L l l L L l R

Double Beat A

68

R R R R R R R R R R L L L L L L L L L L L L

70

R etc... L etc... R

Gallop

73

RRLRRLRRLRRL RLLRLLRLLRLL RRLRRLRLLRLL RRLRRLRLLRLL

77

RRLRLLRRLRLL RRLRLLRRLRLL RLLRLLRRLRLL RLLRLLRRLRLL R

7/8 Paradiddle

82

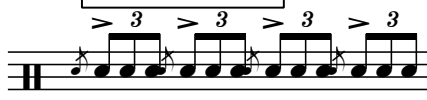
R l r r L r l l R l r r l l R l r r L r l l R l r r l l

84

R l r r l l R l r r L r l l R l r r l l R l r r L r l l R

RUDIMENT SHEET

FLAM ACCENT



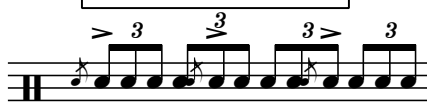
R L R L

FLAM TAP



RR LL RR LL RR LL

FLAM PARADIDDLE



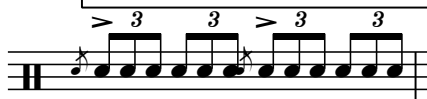
R l r r L r l l R l r r
L r l l R l r r L r l l

FLAM MILL



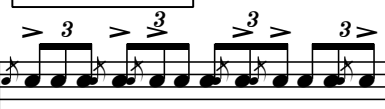
RR l r LL r l RR l r
LL r l RR l r LL r l

FLAM PARADIDDLE-DIDDLE



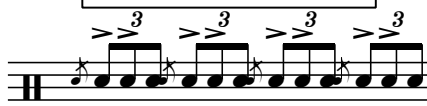
R l r r l l L r l l r r
L r l l r r R l r r l l

PATA FLAFLA



R l r L R l r L R l r L

SWISS ARMY TRIPLET



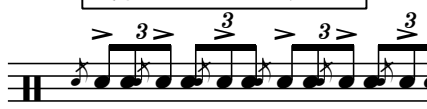
RR l RR l RR l RR l

FLAM DRAG



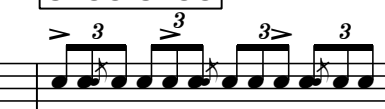
R l r L r l R l r L r l

INVERTED FLAM TAP



R l L r R l L r R l L r

CHOO-CHOO



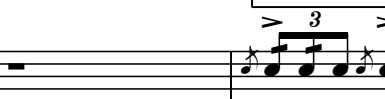
R l r r L r l l R l r r
L r l l R l r r L r l l

CHEESE



R l r L r l R l r L r l

FLAM FIVE



R l r L r l R l r L r l